

Соединения с накидной гайкой для пластиковых трубок.

Трубки: \varnothing 5/3, 6/4, 8/6, 10/8, 12/10, 15/12,5.

Присоединение: M5, M6, M12x1, M12x1,25, G1/8, G1/4, G3/8, G1/2;
R1/8, R1/4, R3/8, R1/2.

Соединения этой серии включают в себя 28 различных моделей. Эти соединения могут использоваться с жесткими нейлоновыми трубками. Накидная гайка затягивается вручную или гаечным ключом. Специальная форма конуса обеспечивает целостность трубки.



1431
Mod. Sprint®



1510



1511
Mod. Sprint®



1560
Mod. Sprint®



1463



1541
Mod. Sprint®



1500



1501



1493



1410



1420



1521



1525



1610



1620



1631-01



1635-01



1631-02



1635-02



1631-03



1580



1590



1550



1540



1600



1470



2651



2661



2665



2669

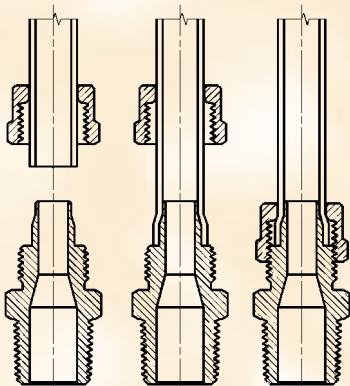


1703



1723

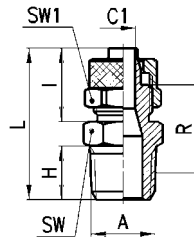
Предназначены для нейлоновых трубок



ОБЩИЕ ХАРАКТЕРИСТИКИ

| | |
|---------------------------|---|
| Материалы | корпус и гайка: латунь OT58, покрытая никелем резьбовое уплотнения: PTFE, Нейлон |
| Присоединение (резьба) | трубная коническая ISO 7 (BSPT) |
| | трубная цилиндрическая ISO 228 (BSP) |
| | M5 - M6 NPT и метрическая (по заказу) |
| Давление | макс. 25 бар (в зависимости от трубки) |
| Трубки для присоединения | нейлон |
| | полиэтилен |
| | поливинилхлорид в оплетке PVC |
| | рилсан полиуретан |
| Диаметр | 5/3, 6/4, 8/6, 10/8, 12/10, 15/12.5 мм. |
| Рабочее тело | сжатый воздух |
| | и жидкости под низким давлением |
| Температура | (см. технические характеристики трубок) |

Фитинги Мод. 1510...



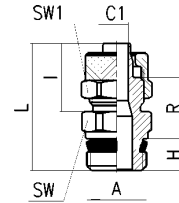
РАЗМЕРЫ

| Мод. | Трубка | A | C1 | H | I | L | R | SW | SW1 |
|---------------------|---------|----------|-----|------|------|------|------|----|-----|
| 1510 5/3 - 1/8 | 5/3 | R1/8 | 2 | 7.5 | 12.5 | 24.5 | 14.5 | 12 | 8 |
| 1510 6/4 - 1/8 | 6/4 | R1/8 | 3 | 7.5 | 15 | 27 | 16 | 12 | 12 |
| 1510 6/4 - 1/4 | 6/4 | R1/4 | 3 | 11 | 15 | 31 | 18.5 | 14 | 12 |
| 1510 6/4 - 3/8 | 6/4 | R3/8 | 3 | 11.5 | 15 | 31.5 | 18.5 | 17 | 12 |
| 1510 6/4 - 1/2 | 6/4 | R1/2 | 3 | 14 | 15 | 34.5 | 20 | 22 | 12 |
| 1510 6/4 - M12x1.25 | 6/4 | M12x1.25 | 3 | 10 | 15 | 30 | 18 | 14 | 12 |
| 1510 8/6 - 1/8 | 8/6 | R1/8 | 5 | 7.5 | 15 | 27 | 16 | 14 | 14 |
| 1510 8/6 - 1/4 | 8/6 | R1/4 | 5 | 11 | 15 | 31 | 18.5 | 14 | 14 |
| 1510 8/6 - 3/8 | 8/6 | R3/8 | 5 | 11.5 | 15 | 31.5 | 18.5 | 17 | 14 |
| 1510 8/6 - 1/2 | 8/6 | R1/2 | 5 | 14 | 15 | 34.5 | 20 | 22 | 14 |
| 1510 10/8 - 1/8 | 10/8 | R1/8 | 6.5 | 7.5 | 16.5 | 28.5 | 16.5 | 14 | 16 |
| 1510 10/8 - 1/4 | 10/8 | R1/4 | 6.5 | 11 | 16.5 | 32.5 | 19 | 14 | 16 |
| 1510 10/8 - 3/8 | 10/8 | R3/8 | 6.5 | 11.5 | 16.5 | 33 | 19 | 17 | 16 |
| 1510 10/8 - 1/2 | 10/8 | R1/2 | 6.5 | 14 | 16.5 | 36 | 20.5 | 22 | 16 |
| 1510 12/10 - 3/8 | 12/10 | R3/8 | 8.5 | 11.5 | 18 | 34.5 | 19 | 17 | 19 |
| 1510 12/10 - 1/2 | 12/10 | R1/2 | 8.5 | 14 | 18 | 37.5 | 20.5 | 22 | 19 |
| 1510 15/12.5 - 1/2 | 15/12.5 | R1/2 | 11 | 14 | 20 | 39.5 | 21 | 22 | 22 |

Фитинги Мод. 1511...

Мод. *Sprint*[®]

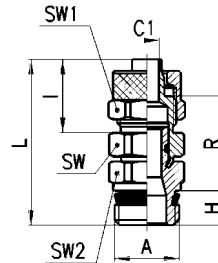
* поставляется с уплотнительным кольцом



РАЗМЕРЫ

| Мод. | Трубка | A | C1 | H | I | L | R | SW | SW1 | |
|--------------------|---------|------|-----|-----|------|------|------|----|-----|---|
| 1511 5/3 - M5 | 5/3 | M5 | 2 | 3,5 | 12,5 | 20,5 | 10,5 | 9 | 8 | * |
| 1511 5/3 - M6 | 5/3 | M6 | 2 | 4 | 12,5 | 21 | 10,5 | 9 | 8 | * |
| 1511 5/3 - 1/8 | 5/3 | G1/8 | 2 | 5,5 | 12,5 | 23,8 | 11,8 | 12 | 8 | |
| 1511 6/4 - M5 | 6/4 | M5 | 3 | 3,5 | 13,5 | 21,5 | 10,5 | 9 | 9 | * |
| 1511 6/4 - M6 | 6/4 | M6 | 3 | 4 | 13,5 | 22 | 10,5 | 9 | 9 | * |
| 1511 6/4 - 1/8 | 6/4 | G1/8 | 3 | 5,5 | 15 | 26,3 | 13,3 | 12 | 12 | |
| 1511 6/4 - 1/4 | 6/4 | G1/4 | 3 | 7 | 15 | 28 | 13,5 | 14 | 12 | |
| 1511 6/4 - 3/8 | 6/4 | G3/8 | 3 | 8 | 15 | 29,3 | 13,8 | 19 | 12 | |
| 1511 8/6 - 1/8 | 8/6 | G1/8 | 5 | 5,5 | 15 | 26,3 | 13,3 | 12 | 14 | |
| 1511 8/6 - 1/4 | 8/6 | G1/4 | 5 | 7 | 15 | 28 | 13,5 | 14 | 14 | |
| 1511 8/6 - 3/8 | 8/6 | G3/8 | 5 | 8 | 15 | 29,3 | 13,8 | 19 | 14 | |
| 1511 10/8 - 1/8 | 10/8 | G1/8 | 6,5 | 5,5 | 16,5 | 27,8 | 13,8 | 14 | 16 | |
| 1511 10/8 - 1/4 | 10/8 | G1/4 | 6,5 | 7 | 16,5 | 29,5 | 14 | 14 | 16 | |
| 1511 10/8 - 3/8 | 10/8 | G3/8 | 6,5 | 8 | 16,5 | 30,8 | 14,3 | 19 | 16 | |
| 1511 10/8 - 1/2 | 10/8 | G1/2 | 6,5 | 9 | 16,5 | 32,5 | 15 | 22 | 16 | |
| 1511 12/10 - 3/8 | 12/10 | G3/8 | 8,5 | 8 | 18 | 32,3 | 14,3 | 19 | 19 | |
| 1511 12/10 - 1/2 | 12/10 | G1/2 | 8,5 | 9 | 18 | 34 | 15 | 22 | 19 | |
| 1511 15/12,5 - 1/2 | 15/12,5 | G1/2 | 11 | 9 | 20 | 36 | 15,5 | 22 | 22 | |

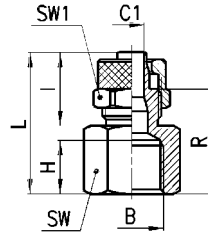
Фитинги Мод. 1560...

Прямой поворотный
Мод. *Sprint*[®].

РАЗМЕРЫ

| Мод. | Трубка | A | C1 | H | I | L | R | SW | SW1 | SW2 |
|------------------|--------|------|-----|-----|------|------|------|----|-----|-----|
| 1560 6/4 - 1/8 | 6/4 | G1/8 | 3 | 5,5 | 15 | 31 | 18 | 12 | 12 | 12 |
| 1560 6/4 - 1/4 | 6/4 | G1/4 | 3 | 7 | 15 | 32,5 | 18 | 12 | 12 | 14 |
| 1560 8/6 - 1/8 | 8/6 | G1/8 | 5 | 5,5 | 15 | 32 | 19 | 14 | 14 | 12 |
| 1560 8/6 - 1/4 | 8/6 | G1/4 | 5 | 7 | 15 | 33,5 | 19 | 14 | 14 | 14 |
| 1560 10/8 - 1/4 | 10/8 | G1/4 | 6,5 | 7 | 16,5 | 34,5 | 19 | 14 | 16 | 14 |
| 1560 10/8 - 3/8 | 10/8 | G3/8 | 6,5 | 8 | 16,5 | 36 | 19,5 | 14 | 16 | 19 |
| 1560 12/10 - 3/8 | 12/10 | G3/8 | 6,5 | 8 | 18 | 38 | 20 | 17 | 19 | 19 |

Фитинги Мод. 1463...

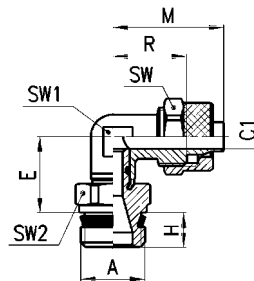


РАЗМЕРЫ

| Мод. | Трубка | B | C1 | H | I | L | R | SW | SW1 |
|------------------|--------|------|-----|------|------|------|------|----|-----|
| 1463 5/3 - 1/8 | 5/3 | G1/8 | 2 | 7.5 | 12.5 | 22.5 | 16 | 14 | 8 |
| 1463 6/4 - 1/8 | 6/4 | G1/8 | 3 | 7.5 | 15 | 25 | 17.5 | 14 | 12 |
| 1463 6/4 - 1/4 | 6/4 | G1/4 | 3 | 11 | 15 | 29 | 21.5 | 17 | 12 |
| 1463 6/4 - 3/8 | 6/4 | G3/8 | 3 | 11.5 | 15 | 29.5 | 22 | 22 | 12 |
| 1463 8/6 - 1/8 | 8/6 | G1/8 | 5 | 7.5 | 15 | 25 | 17.5 | 14 | 14 |
| 1463 8/6 - 1/4 | 8/6 | G1/4 | 5 | 11 | 15 | 29 | 21.5 | 17 | 14 |
| 1463 8/6 - 3/8 | 8/6 | G3/8 | 5 | 11.5 | 15 | 29.5 | 22 | 22 | 14 |
| 1463 10/8 - 1/8 | 10/8 | G1/8 | 6.5 | 7.5 | 16.5 | 26.5 | 18 | 14 | 16 |
| 1463 10/8 - 1/4 | 10/8 | G1/4 | 6.5 | 11 | 16.5 | 30.5 | 22 | 17 | 16 |
| 1463 10/8 - 3/8 | 10/8 | G3/8 | 6.5 | 11.5 | 16.5 | 31 | 22.5 | 22 | 16 |
| 1463 10/8 - 1/2 | 10/8 | G1/2 | 6.5 | 15 | 16.5 | 34.5 | 26 | 27 | 16 |
| 1463 12/10 - 3/8 | 12/10 | G3/8 | 8.5 | 11.5 | 18 | 32.5 | 22.5 | 22 | 19 |

Фитинги Мод. 1541...

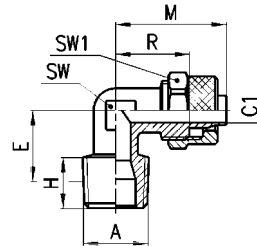
Угловой поворотный
Мод. *Sprint*[®].



РАЗМЕРЫ

| Мод. | Трубка | A | C1 | E | H | M | R | SW | SW1 | SW2 |
|-----------------|--------|------|-----|----|-----|------|----|----|-----|-----|
| 1541 6/4 - 1/8 | 6/4 | G1/8 | 3 | 15 | 5.5 | 22.5 | 15 | 12 | 10 | 12 |
| 1541 6/4 - 1/4 | 6/4 | G1/4 | 3 | 15 | 7 | 22.5 | 15 | 12 | 10 | 14 |
| 1541 8/6 - 1/8 | 8/6 | G1/8 | 5 | 15 | 5.5 | 22.5 | 15 | 14 | 10 | 12 |
| 1541 8/6 - 1/4 | 8/6 | G1/4 | 5 | 15 | 7 | 22.5 | 15 | 14 | 10 | 14 |
| 1541 10/8 - 1/4 | 10/8 | G1/4 | 6.5 | 16 | 7 | 25.5 | 17 | 16 | 12 | 14 |

Фитинги Мод. 1500...

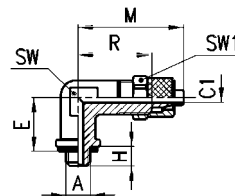


РАЗМЕРЫ

| Мод. | Трубка | A | C1 | E | H | M | R | SW | SW1 |
|---------------------|---------|----------|-----|------|------|------|------|----|-----|
| 1500 5/3 - 1/8 | 5/3 | R1/8 | 2 | 13.5 | 7.5 | 21.5 | 15 | 8 | 8 |
| 1500 6/4 - 1/8 | 6/4 | R1/8 | 3 | 13.5 | 7.5 | 22.5 | 15 | 8 | 12 |
| 1500 6/4 - 1/4 | 6/4 | R1/4 | 3 | 15 | 11 | 22.5 | 15 | 10 | 12 |
| 1500 6/4 - 3/8 | 6/4 | R3/8 | 3 | 16.5 | 11.5 | 23.5 | 16 | 12 | 12 |
| 1500 6/4 - M12x1.25 | 6/4 | M12x1.25 | 3 | 14 | 10 | 22.5 | 15 | 10 | 12 |
| 1500 8/6 - 1/8 | 8/6 | R1/8 | 5 | 13.5 | 7.5 | 22.5 | 15 | 10 | 14 |
| 1500 8/6 - 1/4 | 8/6 | R1/4 | 5 | 15 | 11 | 22.5 | 15 | 10 | 14 |
| 1500 8/6 - 3/8 | 8/6 | R3/8 | 5 | 16.5 | 11.5 | 24 | 16 | 12 | 14 |
| 1500 8/6 - 1/2 | 8/6 | R1/2 | 5 | 21 | 14 | 27 | 19 | 16 | 14 |
| 1500 10/8 - 1/8 | 10/8 | R1/8 | 6.5 | 15 | 7.5 | 25.5 | 17 | 12 | 16 |
| 1500 10/8 - 1/4 | 10/8 | R1/4 | 6.5 | 17 | 11 | 25.5 | 17 | 12 | 16 |
| 1500 10/8 - 3/8 | 10/8 | R3/8 | 6.5 | 16.5 | 11.5 | 25.5 | 17 | 12 | 16 |
| 1500 10/8 - 1/2 | 10/8 | R1/2 | 6.5 | 21 | 14 | 28.5 | 20 | 16 | 16 |
| 1500 12/10 - 3/8 | 12/10 | R3/8 | 8.5 | 19 | 11.5 | 30 | 20 | 14 | 19 |
| 1500 12/10 - 1/2 | 12/10 | R1/2 | 8.5 | 21 | 14 | 30.5 | 20.5 | 16 | 19 |
| 1500 15/12.5 - 1/2 | 15/12.5 | R1/2 | 11 | 21 | 14 | 34 | 22.5 | 16 | 22 |

Фитинг Мод. 1501 5/3-M5

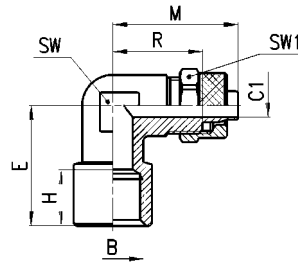
Поставляется с уплотнительным кольцом



РАЗМЕРЫ

| Мод. | Трубка | A | C1 | E | H | M | R | SW | SW1 |
|-------------|--------|----|----|----|---|------|----|----|-----|
| 1501 5/3-M5 | 5/3 | M5 | 2 | 11 | 4 | 21.5 | 15 | 8 | 8 |

Фитинги Мод. 1493...

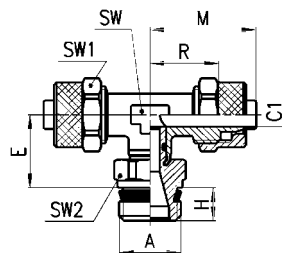


РАЗМЕРЫ

| Мод. | Трубка | B | C1 | E | H | M | R | SW | SW1 |
|------------------|--------|------|-----|------|------|------|------|----|-----|
| 1493 6/4 - 1/8 | 6/4 | G1/8 | 3 | 18.5 | 7.5 | 22.5 | 15 | 10 | 12 |
| 1493 6/4 - 1/4 | 6/4 | G1/4 | 3 | 25.5 | 11 | 26.5 | 19 | 14 | 12 |
| 1493 8/6 - 1/8 | 8/6 | G1/8 | 5 | 18.5 | 7.5 | 22.5 | 15 | 10 | 14 |
| 1493 8/6 - 1/4 | 8/6 | G1/4 | 5 | 25.5 | 11 | 26.5 | 19 | 14 | 14 |
| 1493 10/8 - 1/4 | 10/8 | G1/4 | 6.5 | 25.5 | 11 | 27.5 | 18 | 14 | 16 |
| 1493 12/10 - 3/8 | 12/10 | G3/8 | 8.5 | 28 | 11.5 | 30.5 | 19.5 | 16 | 19 |

Фитинги Мод. 1431...

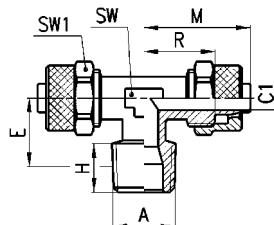
Тройник поворотный
Мод. *Sprint*®.



РАЗМЕРЫ

| Мод. | Трубка | A | C1 | E | H | M | R | SW | SW1 | SW2 |
|-----------------|--------|------|-----|----|-----|------|----|----|-----|-----|
| 1431 6/4 - 1/8 | 6/4 | G1/8 | 3 | 15 | 5.5 | 22.5 | 15 | 12 | 10 | 12 |
| 1431 6/4 - 1/4 | 6/4 | G1/4 | 3 | 15 | 7 | 22.5 | 15 | 12 | 10 | 14 |
| 1431 8/6 - 1/8 | 8/6 | G1/8 | 5 | 15 | 5.5 | 22.5 | 15 | 14 | 10 | 12 |
| 1431 8/6 - 1/4 | 8/6 | G1/4 | 5 | 15 | 7 | 22.5 | 15 | 14 | 10 | 14 |
| 1431 10/8 - 1/4 | 10/8 | G1/4 | 6.5 | 16 | 7 | 25.5 | 17 | 16 | 12 | 14 |

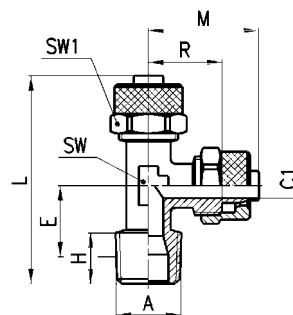
Фитинги Мод. 1410...



РАЗМЕРЫ

| Мод. | Трубка | A | C1 | E | H | M | R | SW | SW1 |
|--------------------|---------|------|-----|------|------|------|------|----|-----|
| 1410 5/3 - 1/8 | 5/3 | R1/8 | 2 | 13.5 | 7.5 | 21.5 | 15 | 8 | 8 |
| 1410 6/4 - 1/8 | 6/4 | R1/8 | 3 | 13.5 | 7.5 | 22.5 | 15 | 8 | 12 |
| 1410 6/4 - 1/4 | 6/4 | R1/4 | 3 | 15 | 11 | 22.5 | 15 | 10 | 12 |
| 1410 8/6 - 1/8 | 8/6 | R1/8 | 5 | 13.5 | 7.5 | 22.5 | 16 | 10 | 14 |
| 1410 8/6 - 1/4 | 8/6 | R1/4 | 5 | 15 | 11 | 22.5 | 16 | 10 | 14 |
| 1410 8/6 - 3/8 | 8/6 | R3/8 | 5 | 16.5 | 11.5 | 24 | 16 | 12 | 14 |
| 1410 10/8 - 1/8 | 10/8 | R1/8 | 6.5 | 15 | 7.5 | 25.5 | 17 | 12 | 16 |
| 1410 10/8 - 1/4 | 10/8 | R1/4 | 6.5 | 17 | 11 | 25.5 | 17 | 12 | 16 |
| 1410 10/8 - 3/8 | 10/8 | R3/8 | 6.5 | 16.5 | 11.5 | 25.5 | 17 | 12 | 16 |
| 1410 10/8 - 1/2 | 10/8 | R1/2 | 6.5 | 21 | 14 | 28.5 | 20 | 16 | 16 |
| 1410 12/10 - 3/8 | 12/10 | R3/8 | 8.5 | 19 | 11.5 | 30 | 20 | 14 | 19 |
| 1410 12/10 - 1/2 | 12/10 | R1/2 | 8.5 | 21 | 14 | 30.5 | 20.5 | 16 | 19 |
| 1410 15/12.5 - 1/2 | 15/12.5 | R1/2 | 11 | 21 | 14 | 34 | 22.5 | 16 | 22 |

Фитинги Мод. 1420...

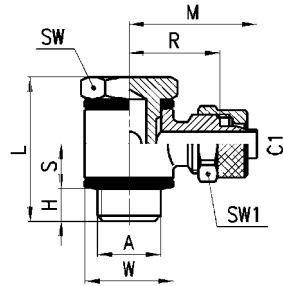


РАЗМЕРЫ

| Мод. | Трубка | A | C1 | E | H | L | M | R | SW1 | SW2 |
|-----------------|--------|------|-----|------|-----|------|------|----|-----|-----|
| 1420 5/3 - 1/8 | 5/3 | R1/8 | 2 | 13.5 | 7.5 | 38.5 | 21.5 | 15 | 8 | 8 |
| 1420 6/4 - 1/8 | 6/4 | R1/8 | 3 | 13.5 | 7.5 | 39.5 | 22.5 | 15 | 8 | 12 |
| 1420 6/4 - 1/4 | 6/4 | R1/4 | 3 | 15 | 11 | 42.5 | 22.5 | 15 | 10 | 12 |
| 1420 8/6 - 1/8 | 8/6 | R1/8 | 5 | 13.5 | 7.5 | 39.5 | 22.5 | 15 | 10 | 14 |
| 1420 8/6 - 1/4 | 8/6 | R1/4 | 5 | 15 | 11 | 42.5 | 22.5 | 15 | 10 | 14 |
| 1420 10/8 - 1/8 | 10/8 | R1/8 | 6.5 | 15 | 7.5 | 43.5 | 25.5 | 17 | 12 | 16 |
| 1420 10/8 - 1/4 | 10/8 | R1/4 | 6.5 | 17 | 11 | 47 | 25.5 | 17 | 12 | 16 |

Фитинги Мод. 1521...

Только по заказу.

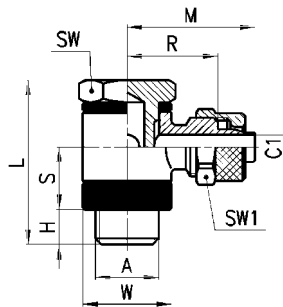


РАЗМЕРЫ

| Мод. | Трубка | A | C1 | H | L | S | M | R | W | SW | SW1 |
|----------------|--------|------|----|---|------|-----|------|------|----|----|-----|
| 1521 5/3 - M5 | 5/3 | M5 | 2 | 3 | 18 | 4.5 | 17 | 10.5 | 8 | 8 | 8 |
| 1521 5/3 - 1/8 | 5/3 | G1/8 | 2 | 6 | 27 | 8.5 | 22.5 | 16 | 14 | 14 | 8 |
| 1521 6/4 - M5 | 6/4 | M5 | 3 | 3 | 18 | 4.5 | 18 | 10.5 | 18 | 8 | 9 |
| 1521 6/4 - 1/8 | 6/4 | G1/8 | 3 | 6 | 27 | 8.5 | 24 | 16.5 | 14 | 14 | 12 |
| 1521 6/4 - 1/4 | 6/4 | G1/4 | 3 | 8 | 29.5 | 8.5 | 26 | 16.5 | 18 | 17 | 12 |
| 1521 6/4 - 3/8 | 6/4 | G3/8 | 3 | 8 | 30 | 8.5 | 28 | 20 | 21 | 19 | 12 |
| 1521 8/6 - 1/8 | 8/6 | G1/8 | 5 | 6 | 27 | 8.5 | 24 | 16.5 | 14 | 14 | 14 |
| 1521 8/6 - 1/4 | 8/6 | G1/4 | 5 | 8 | 29.5 | 8.5 | 26 | 18.5 | 16 | 17 | 14 |
| 1521 8/6 - 3/8 | 8/6 | G3/8 | 5 | 8 | 30 | 8.5 | 28 | 20.5 | 21 | 19 | 14 |
| 1521 8/6 - 1/2 | 8/6 | G1/2 | 5 | 9 | 31 | 8.5 | 30 | 22.5 | 26 | 27 | 14 |

Фитинги Мод. 1525...

Только по заказу.



РАЗМЕРЫ

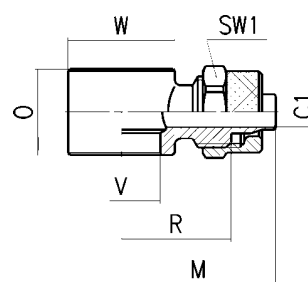
| Мод. | Трубка | A | C1 | H | L | S | M | R | W | SW | SW1 |
|--------------------|---------|------|-----|---|------|------|------|------|----|----|-----|
| 1525 6/4 - 1/8 | 6/4 | G1/8 | 3 | 6 | 31 | 12.5 | 24 | 16.5 | 14 | 14 | 12 |
| 1525 6/4 - 1/4 | 6/4 | G1/4 | 3 | 8 | 33.5 | 12.5 | 26 | 16.5 | 18 | 17 | 12 |
| 1525 6/4 - 3/8 | 6/4 | G3/8 | 3 | 8 | 34 | 12.5 | 28 | 18.5 | 21 | 19 | 12 |
| 1525 8/6 - 1/8 | 8/6 | G1/8 | 5 | 6 | 31 | 12.5 | 24 | 16.5 | 14 | 14 | 14 |
| 1525 8/6 - 1/4 | 8/6 | G1/4 | 5 | 8 | 33.5 | 12.5 | 26 | 18.5 | 16 | 17 | 14 |
| 1525 8/6 - 3/8 | 8/6 | G3/8 | 5 | 8 | 34 | 12.5 | 28 | 20 | 21 | 19 | 14 |
| 1525 8/6 - 1/2 | 8/6 | G1/2 | 5 | 9 | 35 | 12.5 | 30 | 22.5 | 26 | 27 | 14 |
| 1525 10/8 - 1/8 | 10/8 | G1/8 | 6.5 | 6 | 31 | 12.5 | 25 | 16.5 | 14 | 14 | 16 |
| 1525 10/8 - 1/4 | 10/8 | G1/4 | 6.5 | 8 | 33.5 | 12.5 | 27 | 16.5 | 18 | 17 | 16 |
| 1525 10/8 - 3/8 | 10/8 | G3/8 | 6.5 | 8 | 34 | 12.5 | 29.5 | 20 | 21 | 19 | 16 |
| 1525 10/8 - 1/2 | 10/8 | G1/2 | 6.5 | 9 | 35 | 12.5 | 32 | 22.5 | 26 | 27 | 16 |
| 1525 12/10 - 3/8 | 12/10 | G3/8 | 8 | 8 | 34 | 12.5 | 31.5 | 21 | 21 | 19 | 19 |
| 1525 12/10 - 1/2 | 12/10 | G1/2 | 8.5 | 9 | 35 | 12.5 | 33.5 | 23.5 | 26 | 27 | 19 |
| 1525 15/12.5 - 1/2 | 15/12.5 | G1/2 | 11 | 9 | 35 | 12.5 | 36.5 | 23.5 | 26 | 27 | 22 |

Серьга Мод. 1610...

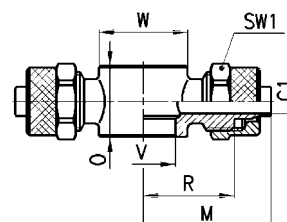
- * Только для сборки с Мод. 1635;
 • сборка возможна с Мод. SCU, SVU, SCO...M5.

РАЗМЕРЫ

| Мод. | Трубка | C1 | M | O | R | V | W | SW1 |
|--------------------|---------|-----|------|------|------|------|----|------|
| 1610 5/3 - M5 | 5/3 | 2 | 17 | 9 | 10.5 | 5.1 | 9 | 8 |
| 1610 5/3 - M6 | 5/3 | 2 | 17 | 9 | 10.5 | 5.1 | 9 | 8 • |
| 1610 5/3 - 1/8 | 5/3 | 2 | 22.5 | 14.5 | 16 | 9.8 | 14 | 8 |
| 1610 6/4 - M5 | 6/4 | 3 | 18 | 9 | 10.5 | 5.1 | 9 | 9 |
| 1610 6/4 - M6 | 6/4 | 2 | 18 | 9 | 10.5 | 5.1 | 9 | 9 • |
| 1610 6/4 - 1/8 | 6/4 | 3 | 24 | 14.5 | 16.5 | 9.8 | 14 | 12 |
| 1610 6/4 - 1/4 | 6/4 | 3 | 26 | 14.5 | 18.5 | 13.2 | 18 | 12 |
| 1610 6/4 - 3/8 | 6/4 | 3 | 28 | 14.5 | 20.5 | 16.7 | 21 | 12 |
| 1610 8/6 - 1/8 | 8/6 | 5 | 24 | 14.5 | 16.5 | 9.8 | 14 | 14 |
| 1610 8/6 - 1/4 | 8/6 | 5 | 26 | 14.5 | 18.5 | 13.2 | 18 | 14 |
| 1610 8/6 - 3/8 | 8/6 | 5 | 28 | 14.5 | 20.5 | 16.7 | 21 | 14 |
| 1610 10/8 - 1/8 | 10/8 | 6.5 | 25 | 14.5 | 16.5 | 9.8 | 14 | 16 * |
| 1610 10/8 - 1/4 | 10/8 | 6.5 | 27 | 14.5 | 18.5 | 13.2 | 18 | 16 * |
| 1610 10/8 - 3/8 | 10/8 | 6.5 | 29.5 | 14.5 | 21 | 16.7 | 21 | 16 * |
| 1610 10/8 - 1/2 | 10/8 | 6.5 | 32 | 14.5 | 23.5 | 21 | 26 | 16 * |
| 1610 12/10 - 3/8 | 12/10 | 8 | 31.5 | 14.5 | 21.5 | 16.7 | 21 | 19 * |
| 1610 12/10 - 1/2 | 12/10 | 8.5 | 33.5 | 14.5 | 23.5 | 21 | 26 | 19 * |
| 1610 15/12.5 - 1/2 | 15/12.5 | 11 | 36.5 | 14.5 | 25 | 21 | 26 | 22 * |



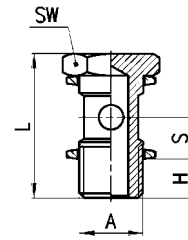
Серьга Мод. 1620...



РАЗМЕРЫ

| Мод. | Трубка | C1 | M | O | R | V | W | SW1 |
|----------------|--------|----|----|------|------|------|----|-----|
| 1620 6/4 - M5 | 6/4 | 3 | 18 | 9 | 10.5 | 5.1 | 9 | 9 |
| 1620 6/4 - 1/8 | 6/4 | 3 | 24 | 14.5 | 16.5 | 9.8 | 14 | 12 |
| 1620 6/4 - 1/4 | 6/4 | 3 | 26 | 14.5 | 18.5 | 13.2 | 18 | 12 |
| 1620 8/6 - 1/8 | 8/6 | 5 | 24 | 14.5 | 16.5 | 9.8 | 14 | 14 |
| 1620 8/6 - 1/4 | 8/6 | 5 | 26 | 14.5 | 18.5 | 13.2 | 18 | 14 |

Болт пустотелый Мод. 1631 01...

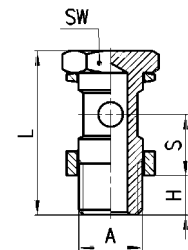


РАЗМЕРЫ

| Мод. | A | H | L | S | SW |
|----------------------|------|---|------|-----|----|
| 1631 01 - M5 | M5 | 4 | 18 | 5.5 | 8 |
| 1631 01 - 1/8 | G1/8 | 6 | 27 | 8.5 | 14 |
| 1631 01 - 1/4 | G1/4 | 8 | 29.5 | 8.5 | 17 |
| 1631 01 - 3/8 | G3/8 | 8 | 30 | 8.5 | 19 |
| 1631 01 - 1/2 | G1/2 | 9 | 31 | 8.5 | 27 |

Болт пустотелый Мод. 1635 01...

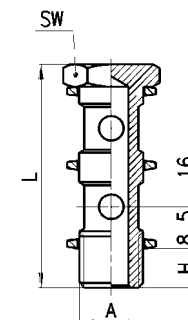
* Модели для сборки с серьгами 1/4.



РАЗМЕРЫ

| Мод. | A | H | L | S | SW |
|---------------------------|----------|---|------|------|------|
| 1635 01 - 1/8 | G1/8 | 6 | 31 | 12.5 | 14 |
| 1635 01 - 1/4 | G1/4 | 8 | 33.5 | 12.5 | 17 |
| 1635 01 - 3/8 | G3/8 | 8 | 34 | 12.5 | 19 |
| 1635 01 - 1/2 | G1/2 | 9 | 35 | 12.5 | 27 |
| 1635 01 - M12x1.25 | M12x1.25 | 8 | 33.5 | 12.5 | 17 * |
| 1635 01 - M12x1.5 | M12x1.5 | 8 | 33.5 | 12.5 | 17 * |

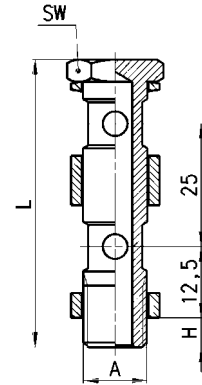
Болт пустотелый Мод. 1631 02...



РАЗМЕРЫ

| Мод. | A | H | L | SW |
|----------------------|------|---|------|----|
| 1631 02 - 1/8 | G1/8 | 6 | 43 | 14 |
| 1631 02 - 1/4 | G1/4 | 8 | 45.5 | 17 |
| 1631 02 - 3/8 | G3/8 | 8 | 46 | 19 |

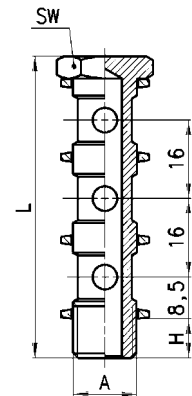
Болт пустотелый Мод. 1635 02...



РАЗМЕРЫ

| Мод. | A | H | L | SW |
|---------------|------|---|------|----|
| 1635 02 - 1/8 | G1/8 | 6 | 56 | 14 |
| 1635 02 - 1/4 | G1/4 | 8 | 58.5 | 17 |
| 1635 02 - 3/8 | G3/8 | 8 | 59 | 19 |
| 1635 02 - 1/2 | G1/2 | 9 | 60 | 27 |

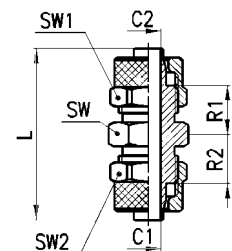
Болт пустотелый Мод. 1631 03...



РАЗМЕРЫ

| Мод. | A | H | L | SW |
|---------------|------|---|------|----|
| 1631 03 - 1/8 | G1/8 | 6 | 59 | 14 |
| 1631 03 - 1/4 | G1/4 | 8 | 61.5 | 17 |
| 1631 03 - 3/8 | G3/8 | 8 | 62 | 19 |

Фитинги Мод. 1580...



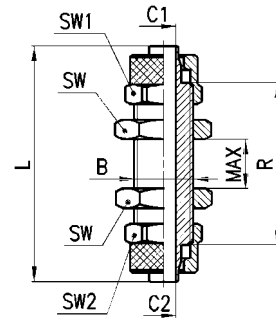
РАЗМЕРЫ

| Мод. | Трубка | C1 | C2 | L | R1 | R2 | SW | SW1 | SW2 |
|---------------|----------|-----|-----|------|------|------|----|-----|-----|
| 1580 5/3 | 5/3 | 2 | 2 | 28.5 | 7.5 | 7.5 | 8 | 8 | 8 |
| 1580 6/4 | 6/4 | 3 | 3 | 34.5 | 10 | 10 | 12 | 12 | 12 |
| 1580 8/6-6/4 | 8/6-6/4 | 5 | 3 | 35 | 10 | 10 | 14 | 14 | 12 |
| 1580 8/6 | 8/6 | 5 | 5 | 35 | 10 | 10 | 14 | 14 | 14 |
| 1580 10/8-6/4 | 10/8-6/4 | 6.5 | 3 | 36.5 | 10.5 | 10 | 14 | 16 | 12 |
| 1580 10/8 | 10/8 | 6.5 | 6.5 | 38 | 10.5 | 10.5 | 14 | 16 | 16 |
| 1580 12/10 | 12/10 | 8.5 | 8.5 | 41 | 10.5 | 10.5 | 17 | 19 | 19 |
| 1580 15/12.5 | 15/12.5 | 11 | 11 | 45 | 11 | 11 | 22 | 22 | 22 |

Фитинги Мод. 1590...

РАЗМЕРЫ

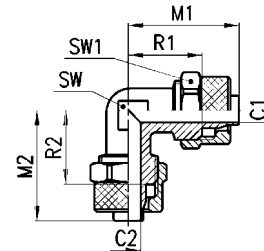
| Мод. | Трубка | B | C1 | C2 | L | R | MAX | SW | SW1 | SW2 | |
|------|---------|---------|---------|-----|-----|----|-----|----|-----|-----|----|
| 1590 | 5/3 | 5/3 | M7x0.75 | 2 | 2 | 40 | 27 | 9 | 9 | 8 | 8 |
| 1590 | 6/4-5/3 | 6/4-5/3 | M10x1 | 3 | 2 | 48 | 34 | 14 | 14 | 12 | 12 |
| 1590 | 6/4 | 6/4 | M10x1 | 3 | 3 | 48 | 33 | 14 | 14 | 12 | 12 |
| 1590 | 8/6-6/4 | 8/6-6/4 | M12x1 | 5 | 3 | 48 | 33 | 12 | 17 | 14 | 14 |
| 1590 | 8/6 | 8/6 | M12x1 | 5 | 5 | 48 | 33 | 12 | 17 | 14 | 14 |
| 1590 | 10/8 | 10/8 | M14x1 | 6.5 | 6.5 | 48 | 31 | 10 | 17 | 16 | 16 |
| 1590 | 12/10 | 12/10 | M16x1 | 8.5 | 8.5 | 53 | 33 | 10 | 19 | 19 | 19 |



Фитинги Мод. 1550...

РАЗМЕРЫ

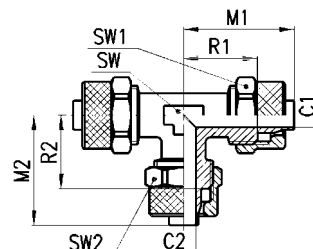
| Мод. | Трубка | C1 | C2 | M1 | M2 | R1 | R2 | SW | SW1 |
|------|---------|-----|-----|------|------|------|------|----|-----|
| 1550 | 6/4 | 3 | 3 | 22.5 | 22.5 | 15 | 15 | 8 | 12 |
| 1550 | 8/6 | 5 | 5 | 22.5 | 22.5 | 15 | 15 | 10 | 14 |
| 1550 | 10/8 | 6.5 | 6.5 | 25.5 | 25.5 | 17 | 17 | 12 | 16 |
| 1550 | 12/10 | 8.5 | 8.5 | 30 | 30 | 20 | 20 | 14 | 19 |
| 1550 | 15/12.5 | 11 | 11 | 34 | 34 | 22.5 | 22.5 | 16 | 22 |



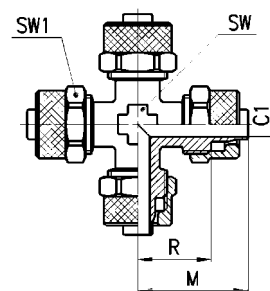
Фитинги Мод. 1540...

РАЗМЕРЫ

| Мод. | Трубка | C1 | C2 | M1 | M2 | R1 | R2 | SW | SW1 | SW2 |
|------|----------|-----|-----|------|------|------|------|----|-----|-----|
| 1540 | 5/3 | 2 | 2 | 21.5 | 21.5 | 15 | 15 | 8 | 8 | 8 |
| 1540 | 6/4 | 3 | 3 | 22.5 | 22.5 | 15 | 15 | 8 | 12 | 12 |
| 1540 | 8/6-6/4 | 5 | 3 | 22.5 | 22.5 | 15 | 15 | 10 | 14 | 12 |
| 1540 | 8/6 | 5 | 5 | 22.5 | 22.5 | 15 | 15 | 10 | 14 | 14 |
| 1540 | 10/8-6/4 | 6.5 | 3 | 25.5 | 24 | 17 | 16.5 | 12 | 16 | 12 |
| 1540 | 10/8-8/6 | 6.5 | 5 | 25.5 | 24 | 17 | 16.5 | 12 | 16 | 14 |
| 1540 | 10/8 | 6.5 | 6.5 | 25.5 | 25.5 | 17 | 17 | 12 | 16 | 16 |
| 1540 | 12/10 | 8.5 | 8.5 | 30 | 30 | 20 | 20 | 14 | 19 | 19 |
| 1540 | 15/12.5 | 11 | 11 | 34 | 34 | 22.5 | 22.5 | 16 | 22 | 22 |



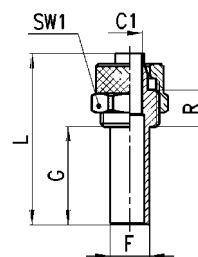
Фитинги Мод. 1600...



РАЗМЕРЫ

| Мод. | Трубка | C1 | M | R | SW | SW1 |
|-----------------|--------|----|------|----|----|-----|
| 1600 6/4 | 6/4 | 3 | 22,5 | 15 | 8 | 12 |
| 1600 8/6 | 8/6 | 5 | 22,5 | 15 | 10 | 14 |

Фитинги Мод. 1470...



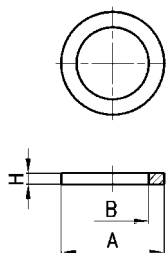
РАЗМЕРЫ

| Мод. | Трубка | F | C1 | G | L | R | SW1 |
|-----------------|--------|---|----|----|----|-----|-----|
| 1470 6/4 | 6/4 | 6 | 3 | 20 | 35 | 7,5 | 12 |
| 1470 8/6 | 8/6 | 8 | 5 | 20 | 35 | 7,5 | 14 |

Уплотнительное кольцо Мод. 2651...



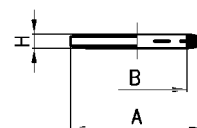
Алюминий



РАЗМЕРЫ

| Мод. | A | B | H |
|-----------------|----|------|-----|
| 2651 1/8 | 14 | 9,8 | 1,5 |
| 2651 1/4 | 18 | 13,2 | 1,5 |
| 2651 3/8 | 22 | 16,7 | 1,5 |
| 2651 1/2 | 26 | 20,9 | 1,5 |

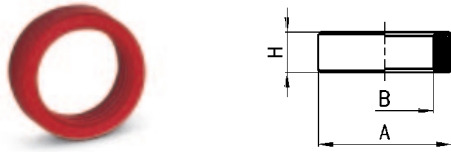
Уплотнительное кольцо Мод. 2661...



РАЗМЕРЫ

| Мод. | A | B | H |
|-----------------|-----|------|-----|
| 2661 M3 | 4,9 | 2,8 | 0,7 |
| 2661 M5 | 8 | 5,2 | 1 |
| 2661 M6 | 9 | 6,2 | 1 |
| 2661 1/8 | 14 | 10,2 | 1,9 |
| 2661 1/4 | 18 | 13,5 | 1,9 |
| 2661 3/8 | 21 | 16,5 | 2,1 |
| 2661 1/2 | 26 | 21,2 | 1,9 |

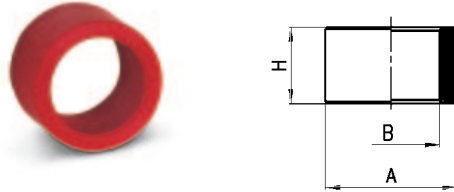
Уплотнительное кольцо Мод. 2665...



РАЗМЕРЫ

| Мод. | A | B | H |
|-----------------|----|------|---|
| 2665 1/8 | 14 | 9,8 | 5 |
| 2665 1/4 | 18 | 13,2 | 5 |
| 2665 3/8 | 21 | 16,8 | 5 |
| 2665 1/2 | 26 | 21,1 | 5 |

Уплотнительное кольцо Мод. 2669...



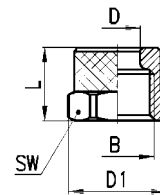
РАЗМЕРЫ

| Мод. | A | B | H |
|-----------------|----|------|----|
| 2669 1/8 | 14 | 9,8 | 10 |
| 2669 1/4 | 18 | 13,2 | 10 |
| 2669 3/8 | 21 | 16,8 | 10 |
| 2669 1/2 | 26 | 21,1 | 10 |

Гайка Мод. 1703...

РАЗМЕРЫ

| Мод. | Трубка | B | D | D1 | L | SW1 |
|-----------------------------|---------|---------|-------|------|------|-----|
| 1703 5/3 - M7x0.75 | 5/3 | M7x0,75 | 5,10 | 8,8 | 8,5 | 8 |
| 1703 6/4 - M8x0.75 | 6/4 | M8x0,75 | 6,10 | 9,8 | 8,5 | 9 |
| 1703 6/4 - M10x1 | 6/4 | M10x1 | 6,10 | 13,3 | 10 | 12 |
| 1703 8/6 - M12x1 | 8/6 | M12x1 | 8,15 | 15,5 | 10 | 14 |
| 1703 10/8 - M14x1 | 10/8 | M14x1 | 10,15 | 17,5 | 13 | 16 |
| 1703 12/10 - M16x1 | 12/10 | M16x1 | 12,2 | 21 | 13,5 | 19 |
| 1703 15/12,5 - M20x1 | 15/12,5 | M20x1 | 15,2 | 24,5 | 16 | 22 |



Фитинги Мод. 1723...

РАЗМЕРЫ

| Мод. | Трубка | B | F | D | D1 | G | L | SW |
|-----------------------------|---------|-------|------|-------|------|------|------|----|
| 1723 6/4 - M10x1 | 6/4 | M10x1 | 8,9 | 6,10 | 13,3 | 18 | 90,5 | 12 |
| 1723 8/6 - M12x1 | 8/6 | M12x1 | 10,9 | 8,15 | 15,5 | 18 | 94,5 | 14 |
| 1723 10/8 - M14x1 | 10/8 | M14x1 | 12,5 | 10,15 | 17,5 | 22 | 96,5 | 16 |
| 1723 12/10 - M16x1 | 12/10 | M16x1 | 15,5 | 12,2 | 21 | 23,5 | 108 | 19 |
| 1723 15/12,5 - M20x1 | 15/12,5 | M20x1 | 18,5 | 15,2 | 24,5 | 28 | 120 | 22 |

