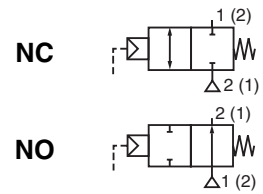




VALVES

pressure operated
stainless steel body
with socket welding ends PN40, DN 15 to 50



2/2
Series
S298

FEATURES

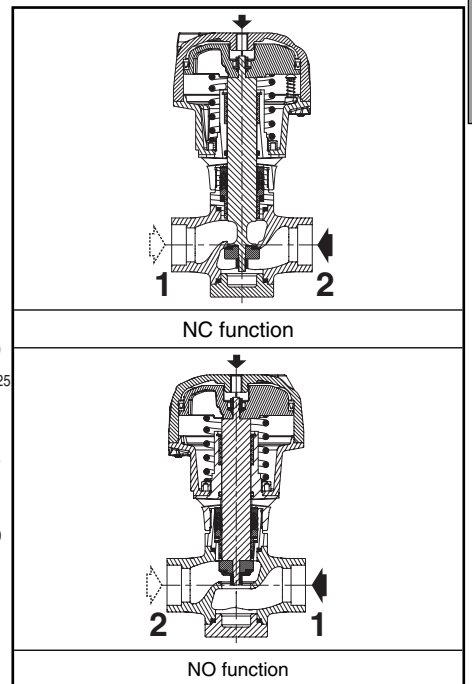
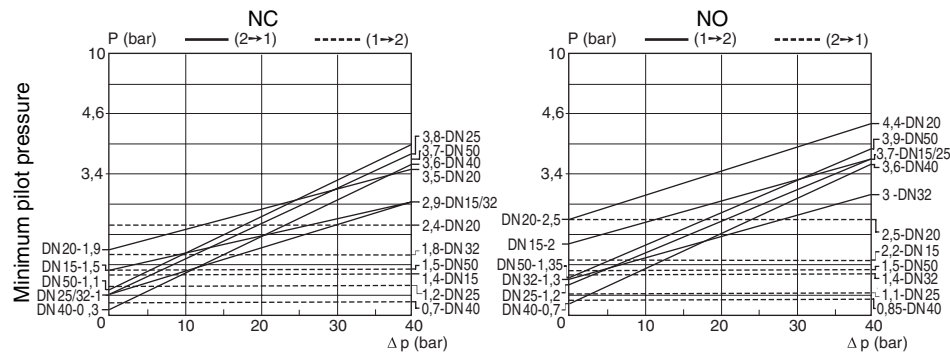
- Ruggedly built valve, particularly recommended for use with steam, superheated water, corrosive fluids
- High-performance, maintenance-free stuffing box, resistant to thermal shock
- Pressure can be applied to any port as needed by the process
- Anti-waterhammer design (fluid entry at orifice 1), recommended for use with liquids
- Vacuum operation up to 10^{-2} mbar
- Allowable backpressure: up to 40 bar
- Optical position indicator as standard
- Autoclavable valve for use at high ambient temperatures (up to 180°C)
- The valves satisfy Pressure Equipment Directive 97/23/EC, category 1 (DN > 32) or article 3.3 (DN ≤ 32)

GENERAL

| | |
|----------------------------|---|
| Differential pressure | 0 to 40 bar [1 bar = 100 kPa] |
| Maximum allowable pressure | 40 bar (within the specified limits, see diagram I) |
| Ambient temperature range | -25°C to +180°C |
| Maximum viscosity | 5000 cSt (mm ² /s) |
| Pilot fluid | Air |
| Max. pilot pressure | 10 bar |
| Min. pilot pressure | See below |



| fluids (*) | temperature range | disc seal (*) |
|---|-------------------|---------------|
| DN 15-20-25: air and gas groups 1 & 2 DN 32-40-50: air and gas group 2 all DN: water, oil, liquids groups 1 & 2 and steam | - 10°C to + 250°C | bronze PTFE |



CONSTRUCTION

Socket welding ends EN 12760

MATERIALS IN CONTACT WITH FLUID

(*) Ensure that the compatibility of the fluids in contact with the materials is verified

| | |
|----------------------|-----------------|
| Body and plug | Stainless steel |
| Stuffing box housing | Stainless steel |
| Stem, disc | Stainless steel |
| Stuffing box packing | PTFE chevrons |
| Disc seal | Bronze PTFE |
| Valve body seal | Graphite |

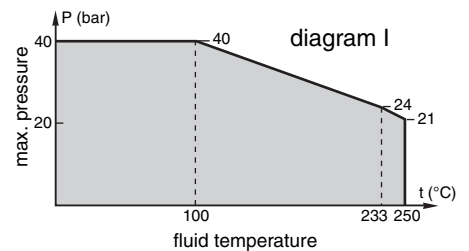
OTHER MATERIALS

Operator Aluminium, nickel plated

SPECIFICATIONS

| DN | ext. pipe diameter (mm) | flow coefficient Kv | | | | pilot pressure (bar) | | operating pressure differential (bar) | operator diameter (mm) | catalogue number |
|-----------------------------|-------------------------|---------------------|---------|---------------------|---------|----------------------|------|---------------------------------------|------------------------|------------------|
| | | 1 → 2 | | 2 → 1 | | min. | max. | | | |
| | | (m ³ /h) | (l/min) | (m ³ /h) | (l/min) | | | | | |
| NC - Normally closed | | | | | | | | | | |
| 15 | 22,4 | 4,4 | 73 | 5 | 83 | * | 10 | 40 | 80 | S298A001 |
| 20 | 27,7 | 7,7 | 128 | 8,5 | 142 | * | 10 | 40 | 100 | S298A002 |
| 25 | 34,5 | 11,5 | 192 | 12 | 200 | * | 10 | 40 | 100 | S298A003 |
| 32 | 43,2 | 18 | 300 | 18 | 300 | * | 10 | 40 | 150 | S298A004 |
| 40 | 49,5 | 29 | 483 | 29 | 483 | * | 10 | 40 | 150 | S298A005 |
| 50 | 62 | 57 | 950 | 57 | 950 | * | 10 | 40 | 200 | S298A006 |

* Minimum pilot pressure varies with differential pressure. See piloting chart above.



00174GB-2008/R01 Availability, design and specifications are subject to change without notice. All rights reserved.

SPECIFICATIONS

| DN | ext. pipe diameter (mm) | flow coefficient Kv | | | | pilot pressure (bar) | | operating pressure differential (bar) | operator diameter (mm) | catalogue number |
|----|----------------------------|---------------------|---------|--------|---------|----------------------|------|---------------------------------------|------------------------|------------------|
| | | 1 → 2 | | 2 → 1 | | min. | max. | | | |
| | | (m³/h) | (l/min) | (m³/h) | (l/min) | | | | | |
| 15 | 22,4 | 3,5 | 58 | 3,5 | 58 | * | 10 | 40 | 80 | S298A007 |
| 20 | 27,7 | 7,2 | 120 | 7 | 117 | * | 10 | 40 | 100 | S298A008 |
| 25 | 34,5 | 11 | 183 | 11 | 183 | * | 10 | 40 | 100 | S298A009 |
| 32 | 43,2 | 18 | 300 | 15 | 250 | * | 10 | 40 | 150 | S298A010 |
| 40 | 49,5 | 28,2 | 470 | 28,2 | 470 | * | 10 | 40 | 150 | S298A011 |
| 50 | 62 | 53 | 883 | 53 | 883 | * | 10 | 40 | 200 | S298A012 |

* Minimum pilot pressure varies with differential pressure. See piloting chart above.

OPTIONS AND ACCESSORIES

- Metal-to-metal sealing disc
- ATEX 94/9/EC versions for potentially explosive atmospheres, categories 2 GD and 3 GD
- Valve seat leakage class VI as defined by FCI 70-2, contact us
- Other pipe connections are available on request

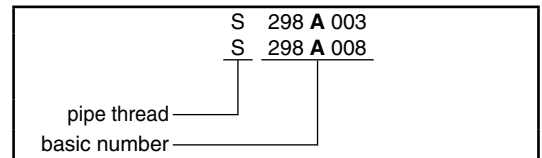
INSTALLATION

- The valves can be mounted in any position without affecting operation
- Compatible with ASTM 1, 2 and 3 oils
- The socket welding ends are according to EN 12760
- Installation/maintenance instructions are included with each valve

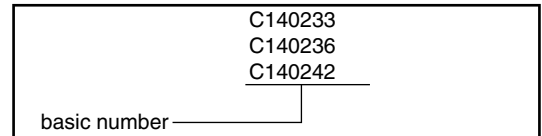
SPARE PARTS KITS

| catalogue number | spare parts kit no. | | |
|------------------|---------------------|-----------------|-------------------|
| | piston seal | actuator spring | stem, disc, seals |
| S298A001 | C140233 | C140299 | C140311 |
| S298A002 | C140234 | C140301 | C140313 |
| S298A003 | C140234 | C140303 | C140315 |
| S298A004 | C140235 | C140305 | C140317 |
| S298A005 | C140235 | C140307 | C140319 |
| S298A006 | C140298 | C140309 | C140321 |
| S298A007 | C140233 | C140300 | C140312 |
| S298A008 | C140234 | C140302 | C140314 |
| S298A009 | C140234 | C140304 | C140316 |
| S298A010 | C140235 | C140306 | C140318 |
| S298A011 | C140235 | C140308 | C140320 |
| S298A012 | C140298 | C140310 | C140322 |

ORDERING EXAMPLES:



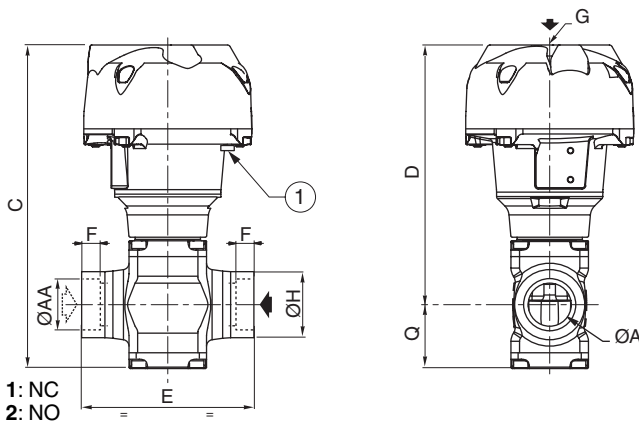
ORDERING EXAMPLES KITS:



DIMENSIONS (mm), WEIGHT (kg)



TYPE 01-02-03-04
Prefix "S"



① Optical position indicator

| type | DN | operator diameter | ØA | ØAA | ØB | C | D | E | F | G | ØH | ØP | Q | weight | |
|------|----|-------------------|----|------|-------|-------|-------|-----|------|-------|----|-------|------|--------|-------|
| | | | | | | | | | | | | | | NC | NO |
| 01 | 15 | 80 | 15 | 22,4 | 110 | 184,1 | 151,6 | 85 | 9,5 | G 1/8 | 33 | 95 | 32,5 | 1,81 | 1,79 |
| | 20 | 100 | 20 | 27,7 | 132,5 | 209,9 | 170,9 | 110 | 11 | G 1/8 | 40 | 117 | 39 | 3,43 | 3,45 |
| 02 | 25 | 100 | 25 | 34,5 | 132,5 | 225,4 | 180,9 | 120 | 12,5 | G 1/8 | 46 | 117 | 44,5 | 4,15 | 4,11 |
| | 32 | 150 | 32 | 43,2 | 191 | 291,2 | 237,2 | 145 | 14,5 | G 1/4 | 57 | 172,5 | 54 | 9,31 | 9,25 |
| 03 | 40 | 150 | 40 | 49,5 | 191 | 325,7 | 259,2 | 150 | 16 | G 1/4 | 65 | 172,5 | 66,5 | 11,38 | 11,36 |
| | 50 | 200 | 50 | 62 | 247 | 409 | 328,5 | 190 | 17,5 | G 1/4 | 75 | 230 | 80,5 | 23,48 | 21,68 |