

### FEATURES

- Compact valve intended for single acting actuator control
- Two maximum pressure ratings depending on coil power
- AC/DC interchangeability of the solenoid head without any need for disassembly of the valve
- The solenoid valves satisfy all relevant EC directives

### GENERAL

**Differential pressure** See «SPECIFICATIONS» [1 bar = 100 kPa]  
**Maximum viscosity** 40 cSt (mm<sup>2</sup>/s)  
**Response time** 8 - 20 ms

| fluids (*)                 | temperature range (TS) | seal materials (*) |
|----------------------------|------------------------|--------------------|
| air, inert gas, water, oil | - 25°C to + 80°C       | NBR (nitrile)      |

### MATERIALS IN CONTACT WITH FLUID

(\*) Ensure that the compatibility of the fluids in contact with the materials is verified

|                       | Brass body                | Stainless steel body |
|-----------------------|---------------------------|----------------------|
| <b>Body</b>           | Brass                     | AISI 316L (1.4404)   |
| <b>Internal parts</b> | Stainless steel           | Stainless steel      |
| <b>Springs</b>        | Stainless steel           | Stainless steel      |
| <b>Seat</b>           | Brass and stainless steel | Stainless steel      |
| <b>Seals</b>          | NBR                       | NBR                  |
| <b>Shading coil</b>   | Copper                    | Copper               |

### ELECTRICAL CHARACTERISTICS

**Coil insulation class** F  
**Connector** Spade plug (cable Ø 6-10 mm)  
**Connector specification** ISO 4400 / EN 175301-803, form A  
**Electrical safety** IEC 335  
**Electrical enclosure protection** Moulded IP65 (EN 60529)  
**Standard voltages** DC (=): 24V - 48V  
 (Other voltages and 60 Hz on request) AC (~): 24V - 48V - 115V - 230V / 50 Hz

| prefix option | power ratings |           |      |            | operator ambient temperature range (TS) (C°) | replacement coil |            | type <sup>(1)</sup> |
|---------------|---------------|-----------|------|------------|--|------------------|------------|---------------------|
|               | inrush ~      | holding ~ |      | hot/cold = |  | ~                | =          |                     |
|               | (VA)          | (VA)      | (W)  | (W)        |  | 230 V/50 Hz      | 24 V DC    |                     |
| SC            | 23            | 14        | 8    | 8 / 10,8   | -25 to + 60                                  | 43005096         | 43005099   | 01                  |
|               | 55            | 23        | 10,5 | 9 / 11,2   | -25 to + 60                                  | 400425-117       | 400425-142 | 02                  |

<sup>(1)</sup> Refer to the dimensional drawings on the following page.

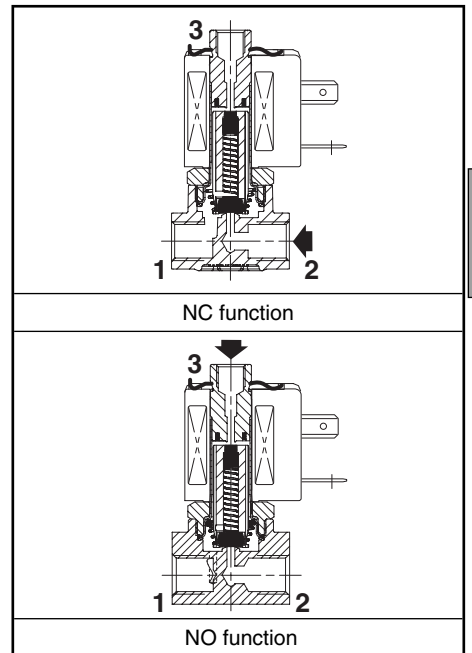
### SPECIFICATIONS

| pipe size                   | orifice size     | flow coefficient Kv |         | operating pressure differential (bar) |         |    |               | power coil (W) |      | catalogue number |            |                 |            | options                  |     |      |   |
|-----------------------------|------------------|---------------------|---------|---------------------------------------|---------|----|---------------|----------------|------|------------------|------------|-----------------|------------|--------------------------|-----|------|---|
|                             |                  |                     |         | max. (PS)                             |         |    |               |                |      | brass            |            | stainless steel |            | maintained man. operator | FPM | EPDM |   |
|                             |                  |                     |         | min.                                  | air (*) |    | water/oil (*) |                |      |                  |            |                 |            |                          |     |      |   |
| (G*)                        | (mm)             | (m <sup>3</sup> /h) | (l/min) | ~                                     | =       | ~  | =             | ~              | =    | ~                | =          | ~               | =          |                          |     |      |   |
| <b>NC - Normally closed</b> |                  |                     |         |                                       |         |    |               |                |      |                  |            |                 |            |                          |     |      |   |
| 1/4                         | 2 <sup>(3)</sup> | 0,11                | 1,8     | 0                                     | 16      | 8  | 16            | 8              | 8    | 10,8             | SCE374A001 | SCE374A061      | SCE374A031 | SCE374A070               | MS  | V    | E |
|                             |                  |                     |         |                                       | 16      | 16 | 16            | 16             | 10,5 | 11,2             | SCE374A016 | SCE374A016      | SCE374A046 | SCE374A046               | MS  | V    | E |
|                             | 2,7              | 0,22                | 3,6     | 0                                     | 10      | 5  | 10            | 5              | 8    | 10,8             | SCE374A002 | SCE374A062      | SCE374A032 | SCE374A071               | MS  | V    | E |
|                             |                  |                     |         |                                       | 10      | 10 | 10            | 10             | 10,5 | 11,2             | SCE374A017 | SCE374A017      | SCE374A047 | SCE374A047               | MS  | V    | E |
|                             | 3,8              | 0,32                | 5,3     | 0                                     | 5       | 2  | 5             | 2              | 8    | 10,8             | SCE374A003 | SCE374A063      | SCE374A033 | SCE374A072               | MS  | V    | E |
|                             |                  |                     |         |                                       | 5       | 5  | 5             | 5              | 10,5 | 11,2             | SCE374A018 | SCE374A018      | SCE374A048 | SCE374A048               | MS  | V    | E |
| <b>U - Universal</b>        |                  |                     |         |                                       |         |    |               |                |      |                  |            |                 |            |                          |     |      |   |
| 1/4                         | 2,7              | 0,22                | 3,6     | 0                                     | 8       | -  | 4             | -              | 8    | 10,8             | SCE374A012 | -               | SCE374A042 | -                        | MS  | V    | E |
|                             |                  |                     |         |                                       | 8       | 4  | 4             | 4              | 10,5 | 11,2             | SCE374A027 | SCE374A027      | SCE374A057 | SCE374A057               | MS  | V    | E |
|                             | 3,8              | 0,32                | 5,3     | 0                                     | 4       | -  | 4             | -              | 8    | 10,8             | SCE374A013 | -               | SCE374A043 | -                        | MS  | V    | E |
|                             |                  |                     |         |                                       | 4       | 2  | 4             | 2              | 10,5 | 11,2             | SCE374A028 | SCE374A028      | SCE374A058 | SCE374A058               | MS  | V    | E |
| <b>NO - Normally open</b>   |                  |                     |         |                                       |         |    |               |                |      |                  |            |                 |            |                          |     |      |   |
| 1/4 <sup>(2)</sup>          | 2,5              | 0,22                | 3,6     | 0                                     | 10      | -  | 10            | -              | 8    | -                | SCE374A007 | -               | SCE374A037 | -                        | MS  | V    | E |
|                             |                  |                     |         |                                       | 10      | 10 | 10            | 10             | 10,5 | 11,2             | SCE374A022 | SCE374A022      | SCE374A052 | SCE374A052               | MS  | V    | E |

<sup>(2)</sup> Pipe size of port 3: G 1/8.

<sup>(3)</sup> Orifice size port 3: 2,5 mm

<sup>(4)</sup> 1 → 3: 0,15 m<sup>3</sup>/h, 2,5 l/min



**E**

### OPTIONS

- Valves can also be supplied with FPM (fluoroelastomer) and EPDM (ethylene-propylene) seals and discs. Use the appropriate optional suffix letter for identification
- Waterproof enclosure with embedded screw terminal coil according to protection class IP67, CEE-10 (prefix WP or WS)
- Explosionproof enclosures for use in zones 1/21-2/22, categories 2-3 to ATEX Directive 94/9/EC (see "Explosionproof solenoids" section)
- Class H coil (10,5 W/11,2 W), prefix HT, example: SCHTE374A016
- Oxygen service with seals and disc in FPM, suffix N, example: SCE374A016NV
- Other pipe connections are available on request
- Plug with visual indication and peak voltage suppression or with cable length of 2 m (see Solenoids, Coils & Accessories section)

### INSTALLATION

- The solenoid valves can be mounted in any position without affecting operation
- Brass solenoid valves have 2 mounting holes in body
- Pipe connections 1/4 (G\*) have standard combination thread according to ISO 228/1 and ISO 7/1. Pipe connections G 1/8 have standard thread according to ISO 228/1
- Installation/maintenance instructions are included with each valve

### SPARE PARTS KIT

| catalogue number   | spare parts kit no. |                |                          |
|--------------------|---------------------|----------------|--------------------------|
|                    | ~                   | =              | maintained man. operator |
| SCE374A001/002/003 | <b>C140038</b>      | -              | <b>C140048</b>           |
| SCE374A031/032/033 | <b>C140038</b>      | -              | <b>C140072</b>           |
| SCE374A016/017/018 | <b>C140038</b>      | <b>C140037</b> | <b>C140048</b>           |
| SCE374A046/047/048 | <b>C140038</b>      | <b>C140037</b> | <b>C140072</b>           |
| SCE374A061/062/063 | -                   | <b>C140037</b> | <b>C140048</b>           |
| SCE374A070/071/072 | -                   | <b>C140037</b> | <b>C140072</b>           |
| SCE374A012/013     | <b>C140042</b>      | -              | <b>C140048</b>           |
| SCE374A042/043     | <b>C140042</b>      | -              | <b>C140072</b>           |
| SCE374A027/028     | <b>C140042</b>      | <b>C140042</b> | <b>C140048</b>           |
| SCE374A057/058     | <b>C140042</b>      | <b>C140042</b> | <b>C140072</b>           |
| SCE272A007         | <b>C140039</b>      | -              | <b>C140048</b>           |
| SCE272A037         | <b>C140039</b>      | -              | <b>C140072</b>           |
| SCE272A022         | <b>C140039</b>      | <b>C140039</b> | <b>C140048</b>           |
| SCE272A052         | <b>C140039</b>      | <b>C140039</b> | <b>C140072</b>           |

(1) Standard suffixes E and V are also applicable to kits.  
- Not available

### ORDERING EXAMPLES:

|    |   |     |   |     |    |              |
|----|---|-----|---|-----|----|--------------|
| SC | E | 374 | A | 016 | MS | 230V / 50 Hz |
| SC | E | 374 | A | 046 | V  | 115V / 50 Hz |
| SC | E | 374 | A | 002 | MS | 24V / DC     |
| SC | E | 374 | A | 061 |    | 230V / 50 Hz |

prefix — pipe thread — basic number — voltage — suffix

### ORDERING EXAMPLES KITS:

|                        |   |
|------------------------|---|
| C140037 <sup>(1)</sup> |   |
| C140038                | V |
| C140038                | E |

basic number — suffix

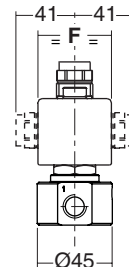
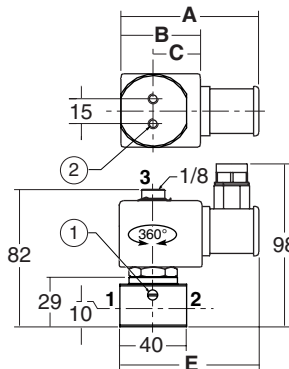
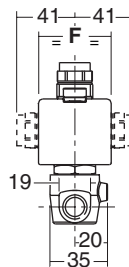
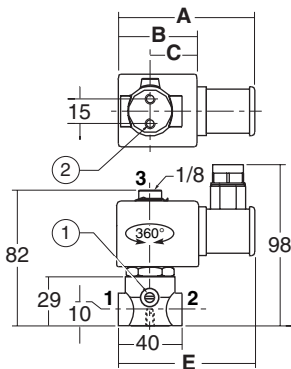
### DIMENSIONS (mm), WEIGHT (kg)



**TYPE 01-02**  
Prefix "SC" Solenoid  
Epoxy moulded  
IEC 335 / ISO 4400  
IP65

Type 01: SCE374A001/002/003/061/062/063/012/013/007  
Type 02: SCE374A016/017/018/027/028/022

Type 01: SCE374031/032/033/070/071/072/042/043/037  
Type 02: SCE374A046/047/048/057/058/052



| type | prefix option | catalogue number                           | A  | B  | C  | E  | F  | weight <sup>(2)</sup> |
|------|---------------|--|----|----|----|----|----|-----------------------|
| 01   | SC            | SCE374A001/002/003/061/062/063/012/013/007 | 70 | 35 | 20 | 75 | 30 | 0,340                 |
|      |               | SCE374031/032/033/070/071/072/042/043/037  | 70 | 35 | 20 | 75 | 30 | 0,410                 |
| 02   | SC            | SCE374A016/017/018/027/028/022             | 85 | 50 | 30 | 85 | 45 | 0,510                 |
|      |               | SCE374A046/047/048/057/058/052             | 85 | 50 | 30 | 85 | 45 | 0,560                 |

- ① Manual operator location.  
② 2 mounting holes Ø M4, depth 6 mm.

(2) including coil and connector.

All leaflets are available on: [www.asconumatics.eu](http://www.asconumatics.eu)