

SI SERIES INTRINSICALLY SAFE LIMIT SWITCH BOX WITH INTEGRAL ATEX CERTIFICATE

According to ATEX directive 94/9/EC SOLDO manufactures a complete range of limit switch box suitable for use in potentially explosive atmosphere.

(INTRINSICALLY SAFE)

The SOLDO SI intrinsically safe limit switch box are complete with integral certification covering both housing and sensor (UL Demko O3 ATEX 135107 X).

Certification includes several Pepperl+Fuchs Namur inductive proximity available in several layouts (cylindrical, slot or V3 type) both with "N" or "SN" option.

(PROTECTION CLASS)

Depending to switch box series and sensor option SI series protection class is divided in two different groups:

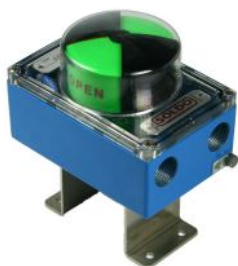
Ex II 2 G/D EEx ia IIC T6 limit switch box suitable for zone 1, 2, 21 and 22

Ex II 2 G EEx ia IIC T6 limit switch box suitable for zone 1 and 2

(SIB SERIES)

CLASS & MATERIALS

- Water proof IP67
- Aluminium body die cromated and polyester powder coated
- Polycarbonate cover
- Stainless steel shaft



BENEFITS

- 3D two colours visual indicator
- Nos. 2 high thickness (15mm) thread cable entry (M20X1.5 or 1/2" NPT)
- Extra terminals for solenoid valve connection
- ISO F05 and Namur shaft mounting pattern
- High resolution, easy-set, independently adjustable splined cams

(SIF SERIES)

CLASS & MATERIALS

- Water proof IP67
- Aluminium body and cover die cromated and polyester powder coated
- Stainless steel shaft



BENEFITS

- Heavy duty metal housing
- 3D two colours visual indicator
- Twin shaft design
- Nos. 2 high thickness (15mm) thread cable entry (M20X1.5 or 1/2" NPT)
- Extra terminals for solenoid valve connection
- ISO F05 and Namur shaft mounting pattern
- High resolution, easy-set, independently adjustable splined cams

(SIA SERIES)

CLASS & MATERIALS

- Water proof IP67
- Aluminium body and cover die cromated and polyester powder coated
- Stainless steel shaft



BENEFITS

- Compact design
- Heavy duty metal housing
- No plastic parts (antistatic)
- Nos. 2 high thickness (15mm) thread cable entry (M20X1.5 or 1/2" NPT)
- Extra terminals for solenoid valve connection
- ISO F05 and Namur shaft mounting pattern
- High resolution, easy-set, independently adjustable splined cams

(SIC SERIES)

CLASS & MATERIALS

- Water proof IP67
- Aluminium body and cover die cromated and polyester powder coated
- Stainless steel shaft



BENEFITS

- Heavy duty metal housing
- Aluminium rotary disk for visual indication
- No plastic parts (antistatic)
- Twin shaft design
- Nos. 2 high thickness (15mm) thread cable entry (M20X1.5 or 1/2" NPT)
- Extra terminals for solenoid valve connection
- ISO F05 and Namur shaft mounting pattern
- High resolution, easy-set, independently adjustable splined cams

S SERIES INTRINSICALLY SAFE LIMIT SWITCH BOX WITH INTEGRAL ATEX CERTIFICATE

(SIS SERIES)

CLASS & MATERIALS

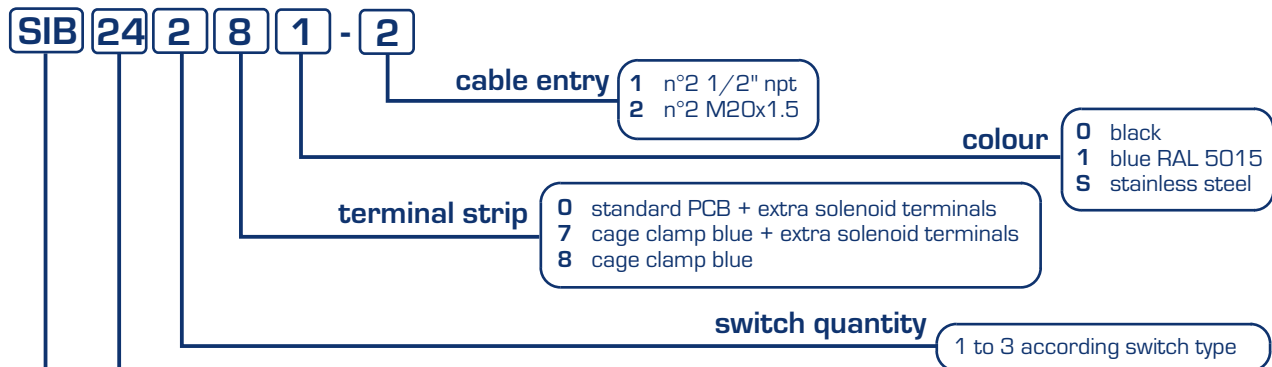
- Water proof IP67
- AISI 316 (CF8M) stainless steel body and cover
- Stainless steel shaft



BENEFITS

- Heavy duty metal housing
- 3D two colours visual indicator
- Twin shaft design
- Nos. 2 high thickness (15mm) thread cable entry (M20X1.5 or 1/2" NPT)
- Extra terminals for solenoid valve connection
- ISO F05 and Namur shaft mounting pattern
- High resolution, easy-set, independently adjustable splined cams

(STANDARD OPTIONS AVAILABLE - Nomenclature)



switch type	protection class	max q.ty installed
* 20 proximity NAMUR P+F NJ4 12GK N	Ex II 2 G EEx ia IIC T6 (zone 1 and 2)	2
* 24 proximity NAMUR P+F NJ2 12GK N	Ex II 2 G EEx ia IIC T6 (zone 1 and 2)	2
* 60 proximity NAMUR P+F SJ 3.5 N	Ex II 2 G/D EEx ia IIC T6 (zone 1, 2, 21 and 22)	2
* 70 proximity NAMUR P+F NJ2 V3 N	Ex II 2 G/D EEx ia IIC T6 (zone 1, 2, 21 and 22)	3
* 62 proximity NAMUR P+F SJ 3.5 SN	Ex II 2 G/D EEx ia IIC T6 (zone 1, 2, 21 and 22)	2
* 39 proximity NAMUR P+F NJ2 12GK SN	Ex II 2 G/D EEx ia IIC T6 (zone 1, 2, 21 and 22)	2
28 proximity NAMUR P+F NJ2 11N G	Ex II 2 G/D EEx ia IIC T6 (zone 1, 2, 21 and 22)	2
30 proximity NAMUR P+F NCB2 12GM35 NO	Ex II 2 G/D EEx ia IIC T6 (zone 1, 2, 21 and 22)	2
36 proximity NAMUR P+F NJ5 11 N G	Ex II 2 G/D EEx ia IIC T6 (zone 1, 2, 21 and 22)	2
37 proximity NAMUR P+F NCN4 12GM35 NO	Ex II 2 G/D EEx ia IIC T6 (zone 1, 2, 21 and 22)	2
50 proximity NAMUR P+F NJ2 11SN G	Ex II 2 G/D EEx ia IIC T6 (zone 1, 2, 21 and 22)	2
59 proximity NAMUR P+F NCB2 12GK35 NO	Ex II 2 G EEx ia IIC T6 (zone 1 and 2)	2
61 proximity NAMUR P+F NCN4 12GK35 NO	Ex II 2 G EEx ia IIC T6 (zone 1 and 2)	2
63 proximity NAMUR P+F SJ 3.5 S1N	Ex II 2 G/D EEx ia IIC T6 (zone 1, 2, 21 and 22)	2
68 proximity NAMUR P+F NJ5 11 N	Ex II 2 G/D EEx ia IIC T6 (zone 1, 2, 21 and 22)	3
69 proximity NAMUR P+F NJ2 11 N	Ex II 2 G/D EEx ia IIC T6 (zone 1, 2, 21 and 22)	2
84 proximity NAMUR P+F NJ2 11 SN	Ex II 2 G/D EEx ia IIC T6 (zone 1, 2, 21 and 22)	2
86 proximity NAMUR P+F NJ4 12GK SN	Ex II 2 G/D EEx ia IIC T6 (zone 1, 2, 21 and 22)	2

- A SIA series
- B SIB series
- C SIC series
- F SIF series
- S SIS series

NOTES

* Standard version available from stock

Terminal strip options depend on switch type.

Most of units can be provided with a pre-wired external connector.

For dimensional drawing consult SB, SF, SA, SC and SS bulletins

SOLD
CONTROLS

SOLD srl - via Monte Baldo, 60
25015 Desenzano d/G. - Brescia - Italy
tel. +39.030.9991309
fax. +39.030.9141977
mail: sales@soldo.net